



DAN-CHIEF
TECHNOLOGY CO.,LTD.

BEYOND YOUR
EXPECTATIONS

www.danchief.com

CONTEN



TS

ABOUT DAN-CHIEF

ABOUT US	01
MILESTONES	03
CERTIFICATES & PATENTS	04
R&D LAB	05
QA & QC	07
PRODUCTION EQUIPMENT	09
YOUR SMART PARTNER ODM X OEM	11

Solution

IP68 RIGID Industrial Networks	13
Smart in-wall wifi outlet	17
M12 Solutions	19
4PPoE structured cabling solutions	21
Your CAT8 is Coming	23

Products

Patch Panel	25
Keystone Jack	27
In-Line Coupler	31

About DAN-CHIE



The image features a large, vibrant green curved shape that sweeps across the upper half of the page. On the left side, the letters 'EF' are displayed in a bold, green, sans-serif font. Behind the letters and the green shape, there are several thin, white, curved lines that create a sense of motion or depth.

EF

ABOUT US	01
MILESTONES	03
CERTIFICATES & PATENTS	04
R&D LAB	05
QA & QC	07
PRODUCTION EQUIPMENT	09
YOUR SMART PARTNER ODM X OEM	11



ABOUT DAN-CHIEF

YOUR FULL-SERVICE OEM/ODM EXPERTS

DAN-CHIEF Technology Co., Ltd. is your Digital Connectivity Expert! We are specializing in cabling, media, network connectors, systems, and complete production packages. With our OEM and ODM solutions you get an end-to-end service from concept to design through manufacturing to after-sales services. Our sales and experienced R&D team will actively support you throughout the production process, improve old designs and create innovative solutions to reduce costs and increase the value of your products.

We work with you, think for you, and create for you.

DAN-CHIEF provides you with complete control throughout the OEM/ODM process while being your dependable design service provider. We have the experience, production facilities, talent and R&D resources to make any OEM/ODM project a huge success.

Always on time, always beyond your expectations!

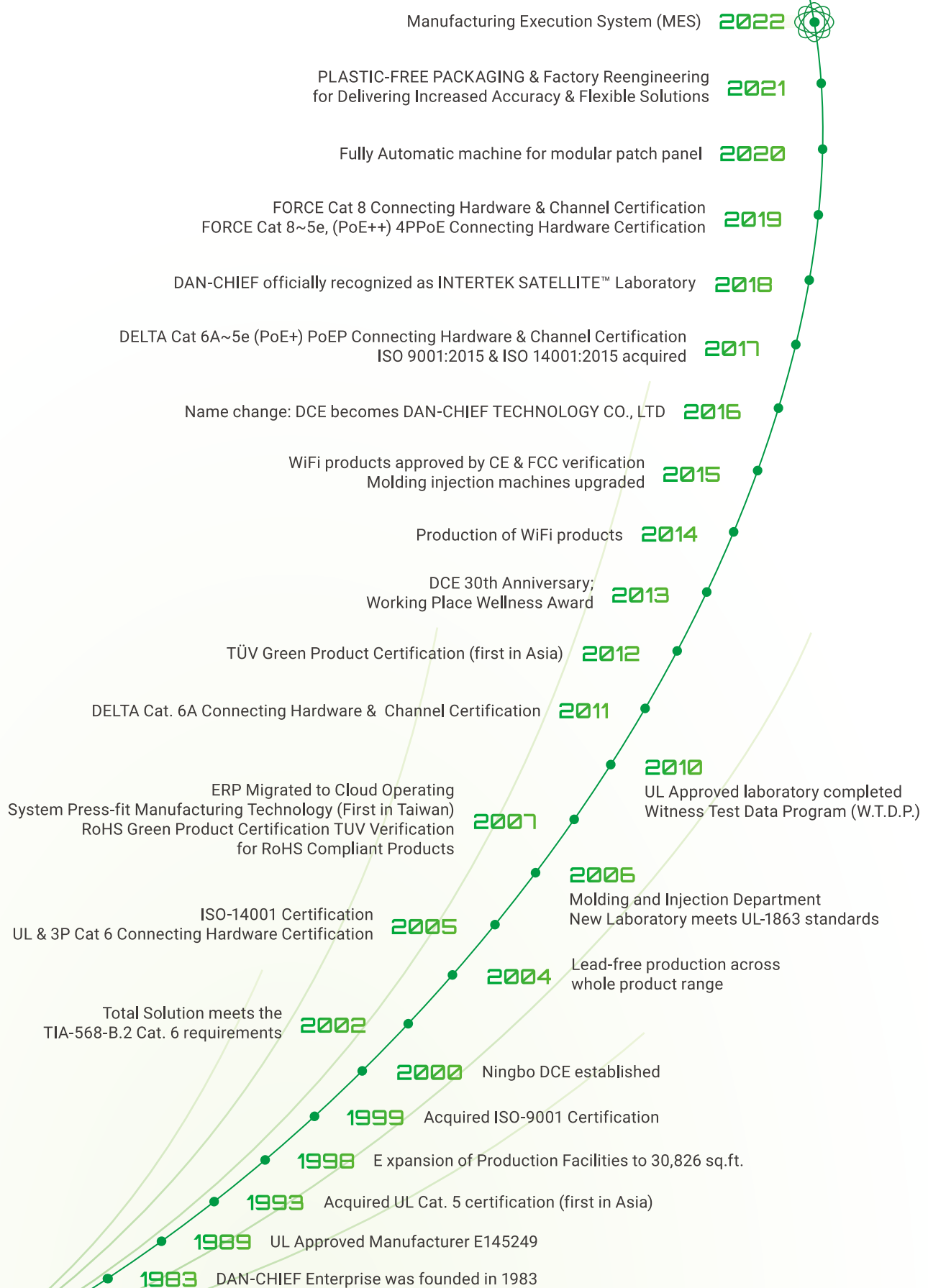
A PARTNER YOU CAN TRUST

Over 39 years in the business we have earned a solid reputation as a company you can trust. DAN-CHIEF has a proven track record of manufacturing excellence with highly satisfied customers around the world. This is reflected in our sales that continue to show steady growth in a very competitive market. Our products are widely used in industrial computing, servers and telecommunication industries.

Our headquarter is located in Shengkeng Dist, New Taipei City, Taiwan. We also have manufacturing facilities and branches in Ningbo, and Indonesia to serve the greater Asian markets.



MILESTONES



CERTIFICATES & PATENTS

DAN-CHIEF pays great attention to innovations & intellectual property rights. Already in the development phase we claim priority rights to secure our patents upfront. By this we protect our R&D efforts and the company's new product development process.

With over 132 product patents valid in 8 countries we continue to invest in product research and innovations to help our customers and partners succeed in the ever-evolving communications industry.

With the latest data performance and safety certifications on all our products, we truly offer the highest standard available on the market today, while providing future-ready solutions for you.

DAN-CHIEF is a TIA member and owns UL/ETL/FORCE and 3P certifications.

Rest assured, we always deliver the best quality providing patent protected, safe & certified goods for you.

1 | DATA PERFORMANCE

- *FORCE Verified*
- *Intertek ETL Verified*
- *3P (Third Party Testing) Verified*



2 | SAFETY

- *UL 1863 Verified*

3 | POE COMPATIBILITY

- *Cat.8/6A/6/5e FORCE Verified*





R&D LAB

DAN-CHIEF has an experienced R&D team and a modern laboratory to develop the highest quality and reliable products. We were also the first one to pass the UL 1863 qualified laboratory test in Taiwan. It has always been our principle to deliver OEM/ODM products with the highest quality and reliability possible.



THE ONLY ONE IN ASIA WITH 2 LAB PROGRAMS INTERTEK : SATELLITE-LAB & UL : WTDP

- Self-Established LAB officially recognized as INTERTEK SATELLITE™ Laboratory
- After 2010 WTDP Laboratory, DAN-CHIEF an Organization has been assessed and found to comply with the relevant requirements of INTERTEK & accepted by Global SATELLITE™

R&D ENGINEERING PROCESS

- Evaluation
- Engineering Analysis & Design
- Prototyping
- Verification
- Mold Development
- Trial Production
- Mass Production



SOFTWARE

- SolidWorks
- SolidWorks Simulation
- SolidWorks PPM
- AutoCAD
- Moldex 3D
- Altium Designer
- CST Studio Suite

GENERAL TEST

1. Functionality
2. Visual Examination
3. Electromagnetic Simulation Software
4. RoHS Compliance
5. Dimensional Examination
6. Rapid Prototyping

RELIABILITY TEST

ELECTRICAL / SAFETY

1. Heat Test
2. Voltage Proof
3. Fault Current Test
4. Millivolt Drop Test
5. Leakage Current Test
6. Contact Resistance
7. Insulation Resistance
8. DC Loop Resistance
9. DC Resistance Unbalance
10. Mechanical Operation with Electrical Load

ENVIRONMENTAL

1. Salt Spray Test
2. Thermal Shock Test
3. Cyclic Damp Heat
4. Thermal Aging Test

MECHANICAL

1. Wagging Test
2. Effectiveness of Connector Coupling Device
3. Insertion and Withdraw Force
4. Wire Retention Force Test
5. IDC Tensile Strength Test
6. Mechanical Operation
7. Withstand Load of Locking Device

TRANSMISSION PERFORMANCE

1. Permanent Link+Channel
2. Connecting Hardware
3. Alien Crosstalk
4. Transfer Impedance
5. Coupling Attenuation
6. Power Over Ethernet Application
7. Optical Return Loss and Insertion Loss



3D RAPID
PROTOTYPE MACHINE



TRANSMISSION
PERFORMANCE
SIMULATION TEST



PROGRAMMABLE AC.
POWER SOURCE



VOLTAGE PROOF
INSTRUMENT



PROGRAMMABLE
TEMPERATURE &
HUMIDITY
MACHINE



SALT SPRAY
MACHINE



MATING/UNMATING
MECHANICAL
OPERATION MACHINE



FORCE GAUGE
INSTRUMENT



Load Box for PoE



FLUKE NETWORK
CABLE ANALYZER



Optical Return
Loss Meter and
insertion loss meter



Test & Measurement
Optical Switch





QA & QC

QUALITY FROM START TO FINISH

A cornerstone of DAN-CHIEF's success is that we not only focus on the finished product but keep on improving the production process. This results in the highest quality with the lowest possible costs for our customers.

Our comprehensive Quality Management System is continuously evaluated and adjusted to ensure our high quality standards are achieved. A combination of incoming components QC, production process QA and final quality control of our products ensures a high production repeatability and product reliability.

FUTURE-PROOF PRODUCTS & SERVICES

While our customers are the focal point of everything we do, their satisfaction stems from the high performance and quality standards that we set for ourselves and our entire product portfolio. DAN-CHIEF products are designed to perform at the highest level for years to come.

- **Commitment to delivering top quality**
- **High performance and longevity**
- **Future-proof designs & technologies**

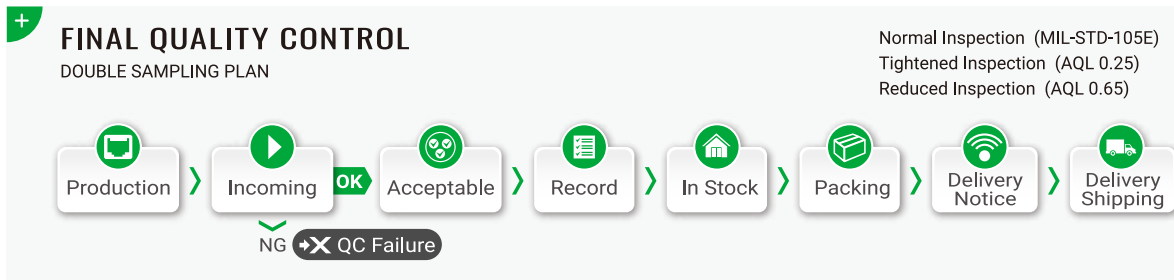
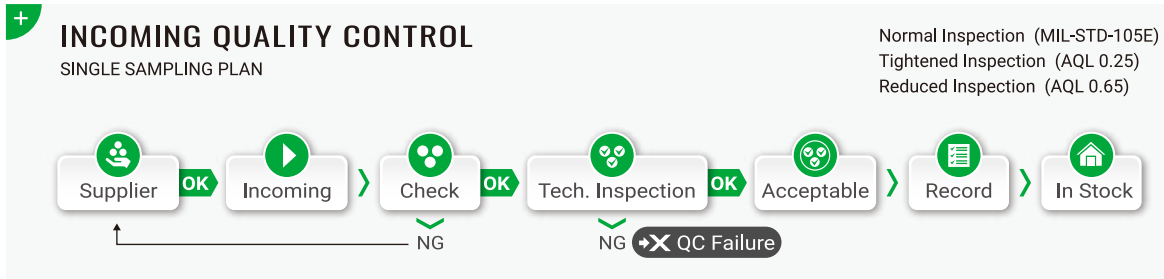


Management
System
ISO 9001:2015
ISO 14001:2015



www.tuv.com
ID 0910099201

QC CHART



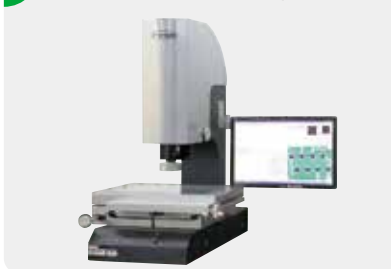
ADVANCED QC CENTER

We have invested heavily in the most advanced inspection equipment, because we know what matters to our customers: reliable, high-performance products that are made to operate for 10 years and longer. Our QC center is an integral part of all IQC, IPQC, and FQC processes which guarantees future product reliability.



Cable/Harness Testing

1 Video Measurement Inspection



2 Coating Thickness Measurement & Material Analysis



3 Dimension Measurement



4 RoHS Analysis



5 Yellowing Resistance Testing Machine



6 Spectrophotometric Analysis





DAN-CHIEF
invests in the very best
injection molding machines

PRODUCTION EQUIPMENT

PLASTIC INJECTION & MOLDING

First established in 2006, DAN-CHIEF's molding department has led the way in mold design, offering innovative and smarter tooling solutions for thousands of new product designs sold worldwide.

Our 28 high-speed injection and molding machines in Taiwan and Ningbo China feature the latest technology such as robotic arm interfaces, automatic sorting of non-conforming products and more. With sizes ranging from 50-ton to 150-ton, both in vertical and horizontal types, we are well-equipped for all kinds of molding injection applications.

Our molding department is capable of designing and developing standard as well as highly complex mold constructions. The molding department works closely with the R&D team to take on short-dated engineering design requests and changes. This flexibility allows us to complete your products in a very short amount of time, never compromising on quality.

LIST OF INJECTION MOLDING MACHINES

1

TAIWAN

Horizontal Type

- 150 ton x 3
- 120 ton x 1
- 100 ton x 1
- 90 ton x 1
- 50 ton x 1

Vertical Type x 2

2

NINGBO, CHINA

Horizontal Type

- 150 ton x 6
- 100 ton x 12

Vertical Type x 1

AUTOMATED PRODUCTION & ASSEMBLY LINES

To deliver consistent quality in mass quantities we have acquired a range of specially designed and customized production lines. These automated production units allow DAN-CHIEF to deliver product batches at maximum output.

Always searching for ways to improve, DAN-CHIEF was the first manufacturer in Taiwan to implement the "Press Fit Technology". Our fully automated Press Fit machines are equipped with automated optical inspection (AOI) of the connectors which allows for high speed and high accuracy production. It is the most cost-effective solution for a large number of applications and for complex designs where soldering is no longer an option.

After the production process our experienced assembly team skillfully delivers final components assembly, single product packaging and product set packaging. We also offer optional custom brand printing, labeling & packaging services. We are determined to provide you with the flexibility you need to meet your special requirements.

Panel Production Line



Die-Cast Keystone Jack Production Line



Coupler Assembly Line



ODM X OEM YOUR SMART PARTNER

OPTIONAL SERVICES

- *Marketing Material*
- *Mold Design & Mechanical Drawings*
- *Installation Instructions*
- *Component Catalogs*
- *UL Safety / Component / System Test Verification*

and many more

CHOOSE THE BEST SOLUTION FOR YOU

DAN-CHIEF is not just an ordinary supplier. We offer extensive OEM and ODM services. Our experienced team consists of designers, engineers, production line & marketing experts. We will guide you throughout the whole production process: from initial design to after-sales services.

Get in touch with us to create your individual project with DAN-CHIEF. We provide a wide range of optional services for your tailor-made one-stop solution.





DAN-CHIEF TECHNOLOGY CO.,LTD.

DAN-CHIEF'S TEAM WORKS ON YOUR CUSTOM ODM/OEM SOLUTION



SCAN NOW
LATEST DESIGNS
AND PROMOTIONS

Solution





IP68 RIGID Industrial Networks	13
Smart in-wall wifi outlet	17
M12 Solutions	19
4PPoE structured cabling solutions	21
Your CAT8 is Coming	23



Workspace
in harsh conditions

IP68 RIGID INDUSTRIAL NETWORKS

DESIGNED FOR HARSH ENVIRONMENTS

DAN-CHIEF's Rigid Industrial Networks provide reliable solutions for various applications such as military networking, pharmaceutical laboratories and any other workspace in harsh conditions. Sturdy enclosures and casings as well as secured protective rubber caps ensure that plugs & cables stay dust & water-free at all times.



WIDE RANGE OF APPLICATIONS

- Industrial Production
- Process Control
(Food & Beverage, Pharmaceutical)
- Outdoor Wireless/Metering
- Diagnostic and Test Instruments
- Oil and Gas Industries
- Military Networking

many more



HIGH-SPEED USB 3.0 CONNECTOR SYSTEM

PART NUMBER	DESCRIPTION
WPUSB3.0PCAAMMXX	Industrial USB 3.0 PATCH CORD
WPUSBIC3.0AAFF	Industrial USB 3.0 COUPLER
[XX] = Length in meters	



INDUSTRIAL KEYSTONE JACKS & BULKHEAD COUPLERS

PART NUMBER	TOOL	DESCRIPTION
WP-H8DS-C6A	110	Cat.6A STP industrial Keystone Jack, w/ dust cap
WP-H8DS-C6	110	Cat. 6 STP industrial Keystone Jack, w/ dust cap
WP-H8DS-C5e	110	Cat. 5e STP industrial Keystone Jack, w/ dust cap
WP-8DS-C6A	-	Cat.6A STP industrial bulkhead Coupler, w/ dust cap
WP-8DS-C6	-	Cat.6 STP industrial bulkhead Coupler, w/ dust cap
WP-8DS-C5e	-	Cat.5e STP industrial bulkhead Coupler, w/ dust cap



HDMI CONNECTOR SYSTEM

PART NUMBER	DESCRIPTION
WPHDMIPCAAMMXX	HDMI industrial patch cord
WPHDMIIC01AAFF	HDMI industrial inline coupler
[XX] = Length in meters	



Fiber LC System



PART NUMBER	DESCRIPTION
A WP-8DS-X02BK	Waterproof Single Mode Duplex LC Adapter
B WP-8DS-X03BK	Waterproof Multimode Duplex LC Adapter
226SDL2L2XXXX03	Waterproof LC Patch Cord, Single Mode, G652D
226MDL8L8XXXX01	Waterproof LC Patch Cord, Multimode, OM2
C 226MDL8L8XXXX02	Waterproof LC Patch Cord, Multimode, OM3

[XXXX] = Length in meters or Feet

BNC Connector System



PART NUMBER	DESCRIPTION
WP-8DS-X05XX	Waterproof BNC Connector
412S1DX05BKXXXX	Waterproof BNC Patch Cord

[XXXX] = Length in meters or Feet

F Connector System



PART NUMBER	DESCRIPTION
WP-8DS-X04XX	Waterproof F Connector
412S1EX06BKXXXX	Waterproof F Patch Cord

[XXXX] = Length in meters or Feet

OTHER RIGID NETWORK ACCESSORIES



PART NUMBER	NO. OF PORTS	DESCRIPTION
625B55S-1	1	Single gang faceplate, stainless steel (IP44 Compliant)
625B55S-2	2	Single gang faceplate, stainless steel (IP44 Compliant)
625B55S-4	4	Double gang faceplate, stainless steel (IP44 Compliant)
WP-MB-2	-	Industrial surface mounting box (IP68 Compliant)
412S-8C6A-WP-C-XX	-	Cat. 6A STP industrial patch cord, w/ Protective cap
412S-8C6-WP-C-XX	-	Cat. 6 STP industrial patch cord, w/ Protective cap
412S-8C5e-WP-C-XX	-	Cat. 5e STP industrial patch cord, w/ Protective cap
WP-AD		Waterproof assembly kit for industrial patch cord

[XX] = Length in meters





WF2A0000 PoE version
(with no gang frame)

SMART IN-WALL WIFI OUTLET

DAN-CHIEF's Smart In-Wall Wi-Fi is a high performance Gigabit Wi-Fi access point designed for superior in-room connectivity. This AP delivers full 2.4G/300Mbps wireless transmission which is the best and most stable transfer rate ideal for latency sensitive applications such as streaming video, VoIP applications, games and more.

UNLIMITED CONNECTIVITY

This In-Wall WiFi AP is designed for multi-device wired and wireless connectivity in home environments, hotel rooms, offices, meeting rooms, school classrooms, cafeterias, and many more. With its simple yet elegant design it fits in a wide range of locations.

APPLICATIONS



KEY FEATURES

01

Small and Elegant: Its size of just 50x50x49mm makes the In-Wall WiFi suitable for a wide range of locations. No wirings or cables on the outside.

02

Simple and Convenient: The user-friendly installation takes just 5 minutes. Easy setup of automatic switching from one hot-spot to another.

03

Robust and Safe: Specifically designed for long term usage, reliable and with proven transfer (UL, CE, FCC, BSMI, NCC verified).

04

Fast and Stable: A real full 2.4G of 300Mbps wireless transfer rate ensures a stable and fast connection also for mobile devices.

AC & PoE VERSIONS AVAILABLE

You can choose between an AC or a PoE power supply depending on your needs. In addition, DAN-CHIEF provides custom faceplate solutions for different regional standards.



PART NUMBER	POWER SUPPLY	DESCRIPTION
WF1A0000	AC	In-Wall WiFi, w/o Faceplate, 50 x 50 mm
WF1A0001	AC	In-Wall WiFi, US Vertical Faceplate, 114 x 70 mm
WF1A0004	AC	In-Wall WiFi, British Faceplate, 86 x 86 mm
WF2A0000	PoE	In-Wall WiFi, w/o Faceplate, 50 x 50 mm
WF2A0001	PoE	In-Wall WiFi, US Vertical Faceplate, 114 x 70 mm
WF2A0004	PoE	In-Wall WiFi, British Faceplate, 86 x 86 mm

SPECIFICATIONS

- WAN + LAN Ethernet and Wireless Fidelity
- WANx1 + LANx1 and 2 x 2 Access Point Wall Plate
- 2 Transmitter / 2 Receiver (2 x 2) Antenna
- 802.11b/g/n, Wi-Fi 300Mbps QoS WMM, Compliant with IEEE 802.11n Standards.
- Supports Internet Access Point Mode and Two 10/100/1000 Ethernet Port.
- 3 x 2dBi High-Gain Hidden Antenna with Compact Size
- Wall-Plate Style and Streamline Appearance
- WAN and LAN Support 1G Gigabit Ethernet
- 2T2R MIMO

You can also customize your own exclusive outlet for your distribution area.



M12 SOLUTIONS



If you have M12 application requirements, please contact us.

In traditional office environments, Ethernet connections are typically made using the standard RJ45 connector. However, when Ethernet migrates to industrial environments, a wide range of contaminants come into play, making M12 connectors a more durable choice.

DAN-CHIEF's M12 connector solutions for machine industrial automation and control applications provides a solution that safely and reliably ensures the communication in industrial environments. IP67 shielded connectors and cable assemblies are easy to install.

The primary solution typically involves encasing or shrouding the standard RJ45 in either a plastic or metal housing, depending on the application and required durability. However, M12 connector solutions have been increasing in popularity as well and offer an array of unique benefits.





4PPoE STRUCTURED CABLING SOLUTIONS

DAN-CHIEF's 4PPoE Cabling Solutions can save you time and money as there is no need for additional electrical power cabling. All products from our 4PPoE portfolio are designed and manufactured to comply with the given test requirements from ISO/IEC 11801 and ANSI/TIA-568.2-D standards.

A range of performance characteristics is tested for these products including a Power over Ethernet Plus Test (mating and un-mating connectors under electrical load).



4PPoE KEYSTONE JACKS



DESCRIPTION	IDC	CATEGORY
QKSS(D) Series STP keystone Jack	Tool-Less	5e, 6, 6A, 8
QKSS(D) Series UTP Keystone Jack	Tool-Less	5e, 6
QK(D)E Series UTP Keystone Jack	Tool-Less	6A

4PPoE PATCH PANELS

DAN-CHIEF's UTP Patch Panels are fully interoperable with Cat. 6A, Cat.6 and Cat. 5e products, giving you great flexibility and full 4PPoE compatibility. The 50 micro-inch gold plated contact pins within the modular jack ensure high-quality transmission.



DESCRIPTION	IDC	PORT	CATEGORY
3012IP9IAXF Series Patch Panel, w/ rear cable manager	110/Krone	1U24	5e, 6, 6A

4PPoE TOOLLESS PLUG



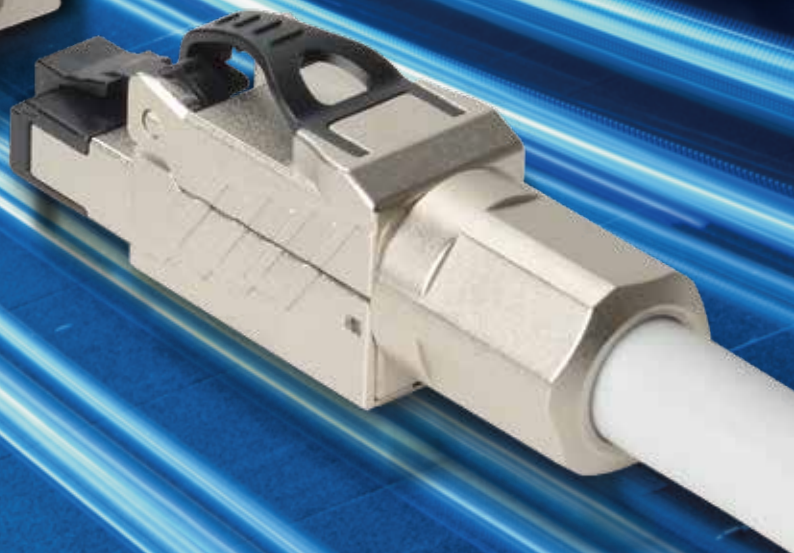
DESCRIPTION	IDC	CATEGORY
101S001	Tool-Less	6A, 8

4PPoE SAFETY / FLEXIBILITY / RELIABILITY

DAN-CHIEF's 4PPoE structured cabling solutions provide you with reliable and safe ways of supplying electricity to a variety of networking, AV and computing devices without an outlet or adapter. Our 4PPoE products also help you reduce the amount of building materials required to power and connect the devices in your network by allowing one cable to transfer both, electricity and data.

On top of that you gain flexibility as your devices, such as wireless access points, are no longer tethered to an electrical outlet and can be located and/or repositioned wherever they are needed most.

YOUR CAT.8 IS COMING



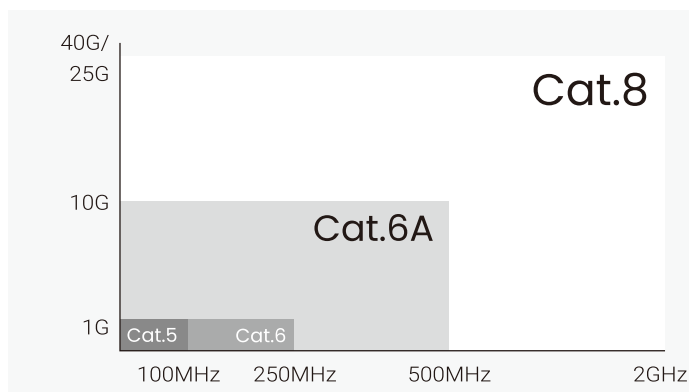
The new DAN-CHIEF Cat.8 Solution provides the highest level in copper infrastructure that will meet your Data Centre grows.



DAN-CHIEF Cat.8 Tool-Less termination Connector series is a feature proof solution that coming up with:

A small sized keystone jack for better termination experience, the Cat 8 system has the same connector form factor as Cat 6A - allowing for a seamless migration to 25G and 40G networks.

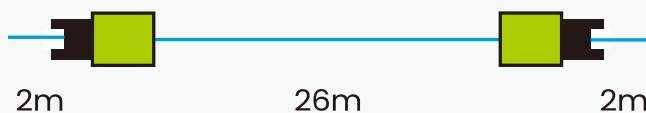
A tool-less Field Termination Plug meets high density usage with a short-depth keystone jack for better space arrangement.



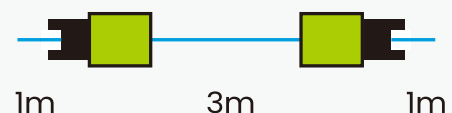
A "FORCE" verified products that exceed all permanent link and channel applications. DAN-CHIEF Cat.8's channel-rated performance that beyond your expectations.

Channel Test Configurations

Long Channel



Short Channel



The high frequency and bandwidth will be needed by Data Centers, the Cat.8 will be looking forward to be applied and ready to the future growth in a rapidly evolving ICT Technology.

If you have any questions, regards specifications or pricing then feel free to contact us.

Products





Patch Panel	25
Keystone Jack	27
In-Line Coupler	31

PATCH PANELS

DAN-CHIEF's Patch Panels have been designed with quick and easy assembly in mind. They incorporate rear 110/Krone IDCs and universal labels for either 568-A or B wiring. An innovative new pyramid design allows for even faster and easier punch-down termination. It is definitely your solution to efficient network connections.

CAT. 6A PATCH PANEL

A



STAGGERED PORT DESIGN



The staggered alignment helps to reduce the static and crosstalk between the inputs, improving your networking performance. It has also passed 15M – 90M Permanent Link and Channel tests.

B



	PART NUMBER	IDC	PORT	DESCRIPTION
A	3012IP9IAXFEG6A	110/Krone	1U24	Cat.6A UTP Patch Panel, w/rear cable manager
B	3012IP002A2E2C01	110/Krone	1U24	Cat. 6A STP Patch Panel

CAT. 6 PATCH PANEL

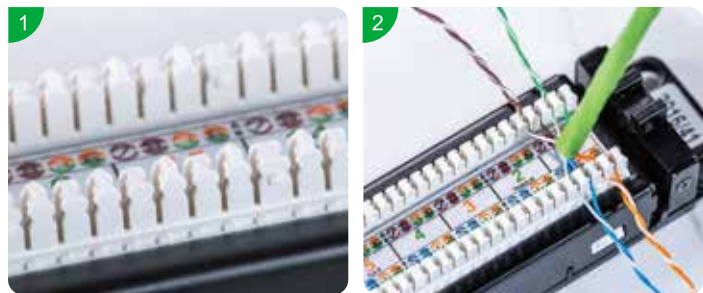


	PART NUMBER	IDC	PORT	DESCRIPTION
A	3012IP-AI624-C6ABL	110/Krone	1U24	Cat. 6 UTP Patch Panel, w/ rear cable manager * +
B	3012IP9IAMFEF7AA	110/Krone	1U24	Cat. 6 UTP Patch Panel *
C	3012IP9IAMFEF7AA	110/Krone	2U48	Cat. 6 UTP Patch Panel *

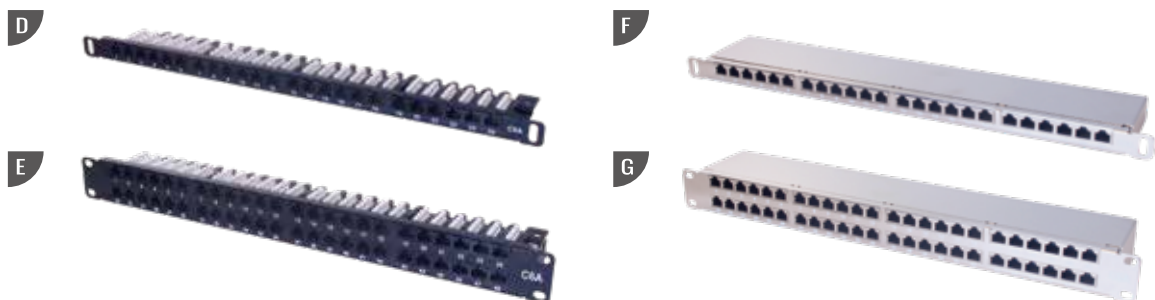
* Cat5e available + Color-coded labels

UNIQUE PYRAMID DESIGN

Unlike traditional patch panels, these new panels have an innovative 'pyramid' design. This allows users to push the wire pairs into the slots – no untwisting needed. This not only reduces termination time, but also ensures the pairs remain together, avoiding wiring errors.

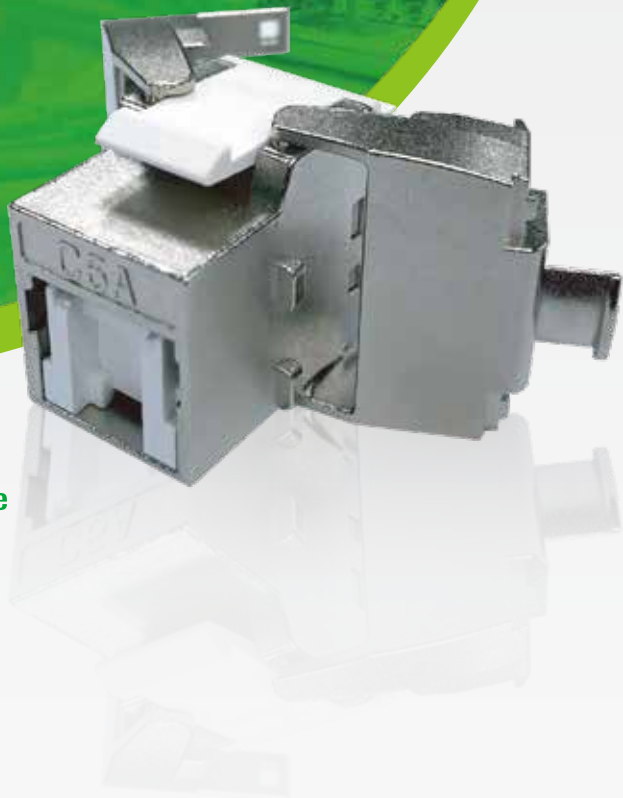


High Density Patch Panel



	PART NUMBER	IDC	PORT	DESCRIPTION
D	3012IP003A1E1X01 Series	110/Krone	0.5U 24	Cat6A Cat6 Cat5e UTP Patch Panel
E	3012IP004A2F1X01 Series	110/Krone	1U 48	Cat6A Cat6 Cat5e UTP Patch Panel
F	3012IP003A1E2X01 Series	110/Krone	0.5U 24	Cat6A Cat6 Cat5e STP Patch Panel
G	3012IP004A2F2X01 Series	110/Krone	1U 48	Cat6A Cat6 Cat5e STP Patch Panel

KEYSTONE JACK



Fine Outward Appearance



Excellence Quality



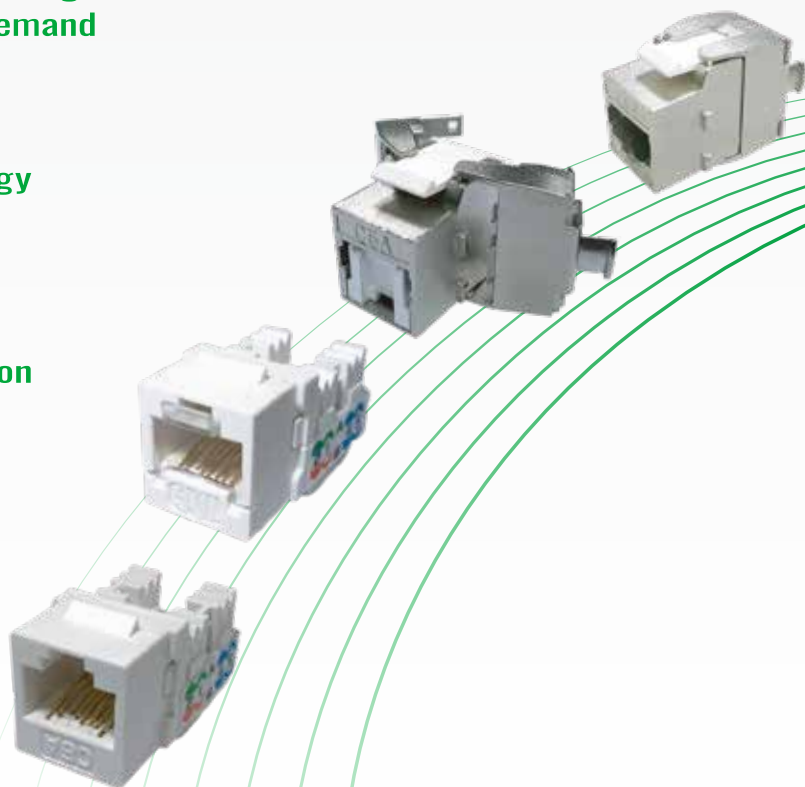
**Offering OEM/ODM Design
According Clients Demand**



**Press - Fit Technology
For Green Products**



**Superior Transmission
Performance**

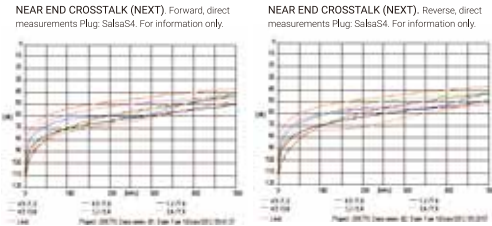


FORCE Verified C6A STP Connecting Hardware Keystone Jack



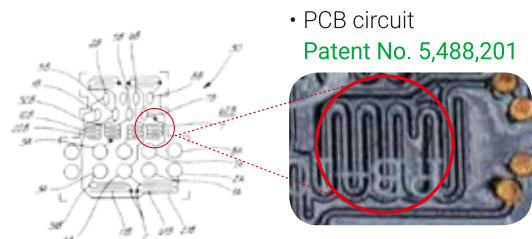
01

The brand new screened keystone jack features a mechanical design for optimizing the NEXT in both measurement directions, which are the most critical criteria outlined by Class EA standard.



02

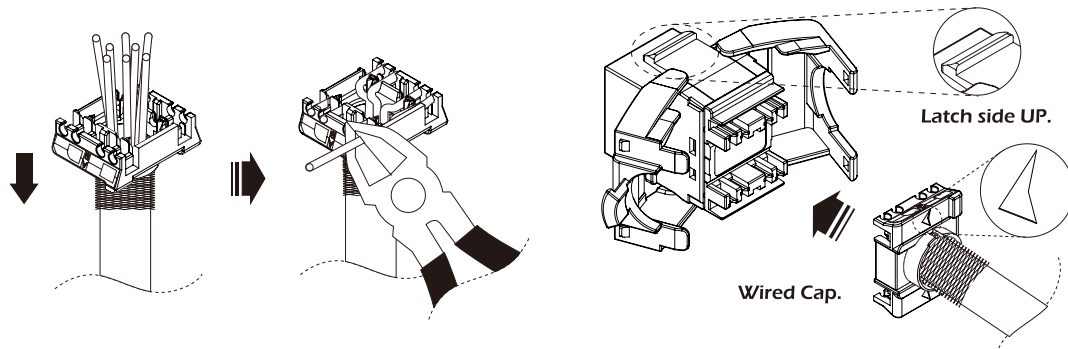
Patented PCB route provides excellent works in easing the internal magnetic coupling up to bandwidth 500MHz.



• PCB circuit
Patent No. 5,488,201

03

The Tool-less design requires no punch down tool. Now the termination of shielded modular jack takes you 90 seconds only. It surely increases the efficiency of FTP installation.



PART NUMBER

DESCRIPTION

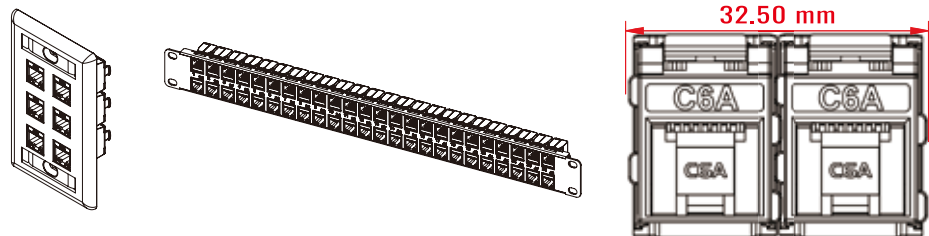
QKSS-ABL-C6A	Cat.6A STP keystone jack, 180 degree, w/ IDC cap
QKSSD-ABL-C6A	Cat.6A STP keystone jack, 180 degree, shuttered, w/ IDC cap
QKSSNB-C6A	Cat.6A STP Tool-less keystone jack, 180 degree
110T0001BK	QK Series Keystone Jack Termination Tool

[XX] = Color Option

ETL Verified C6A UTP Connecting Hardware Keystone Jack

01

Slim & Compact with Patented Special Mechanism design!



02

Compact design allows 6-port faceplate and 48-port high density blank panel usage.



03

With Patent on special housing & dust-cover design!



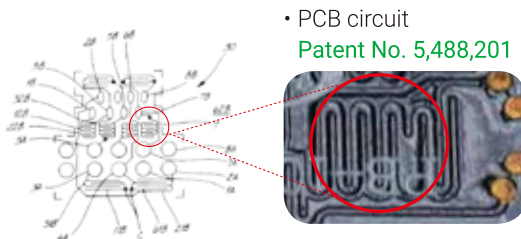
PART NUMBER	IDC	DESCRIPTION
QKDE-ABL-C6A-XX	Tool-Less	Cat.6A UTP keystone jack, Tool-Less, shuttered
[XX] = Color Option		

C6A UTP Keystone Jack



01

Patented PCB route provides excellent works in easing the internal magnetic coupling up to bandwidth 500MHz.



02

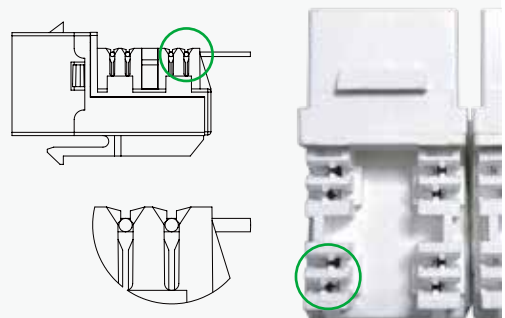
Slim & Compact design could fit in any standard blank panel.



In order to reach higher performance level, DAN-CHIEF R&D dept. has kept trying to meet Category 6A transmission criteria. With DAN-CHIEF C6A total solution products applying with patch panels, keystone jacks, outlets, patch cords and verified cables, the performance could fulfill your high speed transmission requirements from telecommunication room to work area.

Fast installation

DAN-CHIEF special wire IDC mechanism on keystone jack, help to separates cable-twist pairs when lacing the wires and more user friendly.



PART NUMBER	IDC	DESCRIPTION
QA-ABL-C6A-XX	110	Cat.6A UTP keystone jack, 90 degree, w/ IDC cap
QAD-ABL-C6A-XX	110	Cat.6A UTP keystone jack, 90 degree, shuttered, w/ IDC cap

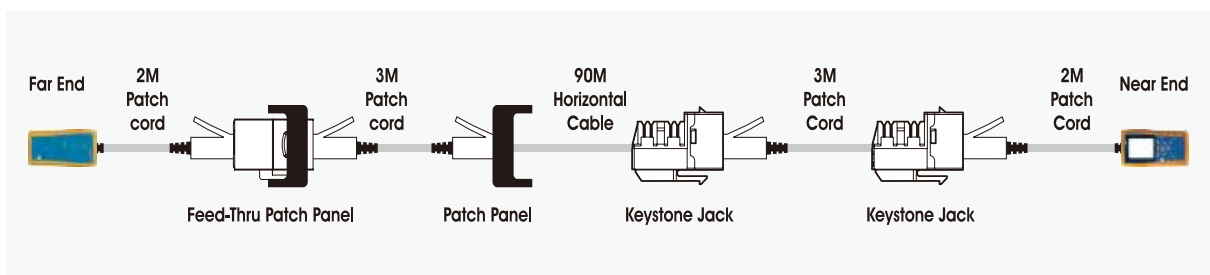
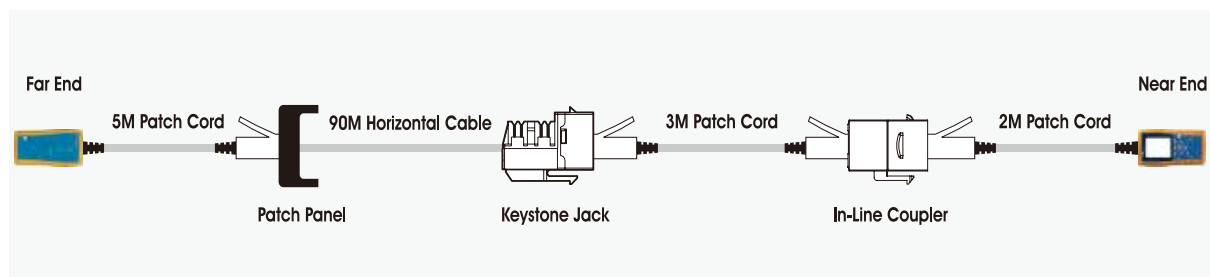
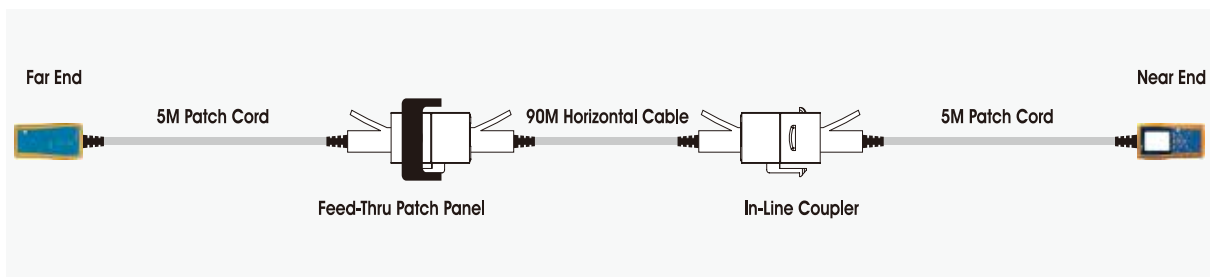
[XX] = Color Option

IN-LINE COUPLER

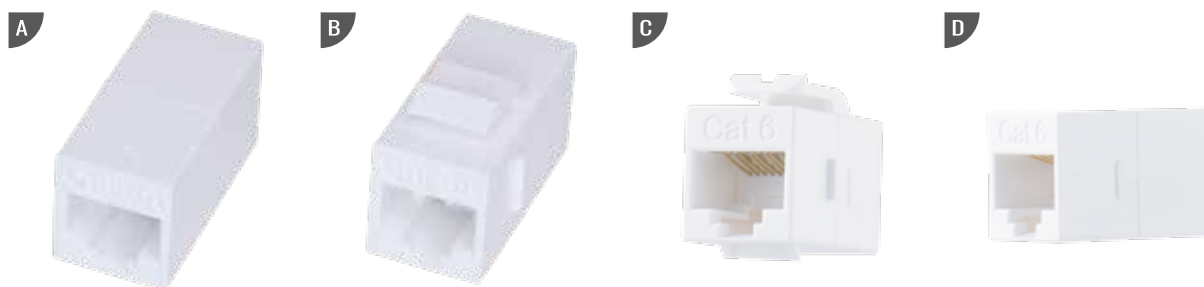


Features

1. Slim and Compact. It can be assembled as a 48-port feed-through panel.
2. It can be used in different conditions and transmission compliance remains.
3. It features Press-Fit Technology, which is lead-free and no solder.
4. 4PPoE Verified.

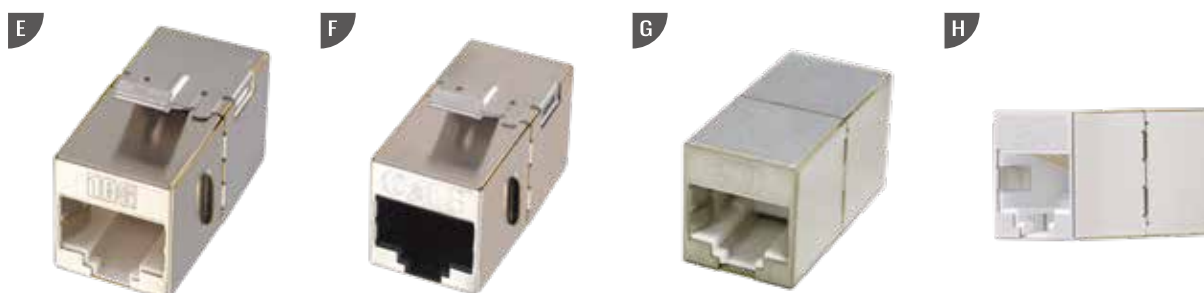


180 Degree Unshielded Coupler



	Part No.	Description	Feature
A	2100YQ8C6AXX	Cat.6A UTP coupler, mobile style	C Mini Coupler : 2100IC02UH8A5-C6 Compact design Compact figure W25 x H19.3mm allows to fit in 1U- 48ports patch panel.
	2100YQ8C6XX	Cat.6 UTP coupler, mobile style	
	2100YQ8C5eXX	Cat.5e UTP coupler, mobile style	
B	2100XQ8C6AXX	Cat.6A UTP coupler	
	2100XQ8C6XX	Cat.6 UTP coupler	
	2100XQ8C5eXX	Cat.5e UTP coupler	
C	2100IC02UH8A5	Cat.6 UTP coupler, mini type	
	2100IC02UH8A4	Cat.5e UTP coupler, mini type	
D	2100IC02UH8N5	Cat.6 UTP coupler, mini type	
	2100IC02UH8N4	Cat.5e UTP coupler, mini type	

180 Degree Shielded Coupler

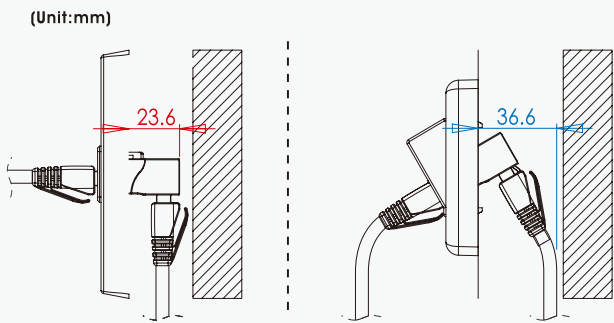


	Part No.	Description	Feature
E	2100LQ8SC6AXX	Cat.6A STP coupler	2100LQ8SC6A works as feed-through patch panel (P/ N.: 3012KW-24-2100L-C6A), verified by ETL in Cat.6A 4-connector channel topology.
F	2100LQ8SC6XX	Cat.6 STP coupler	
	2100LQ8SC5eXX	Cat.5e STP coupler	
G	02100LQF8S10GXX	Cat.6A STP coupler, mobile style	
	02100LQF8SC6XX	Cat.6 STP coupler, mobile style	
	02100LQF8SC5eXX	Cat.5e STP coupler, mobile style	
	2100IC02SH8A4XX	Cat.5e STP coupler, mini type	
	2100IC02SH8A5XX	Cat.6 STP coupler, mini type	
	2100IC02SH8N4XX	Cat.5e STP coupler, mini type	
H	2100IC02SH8N5XX	Cat.6 STP coupler, mini type	

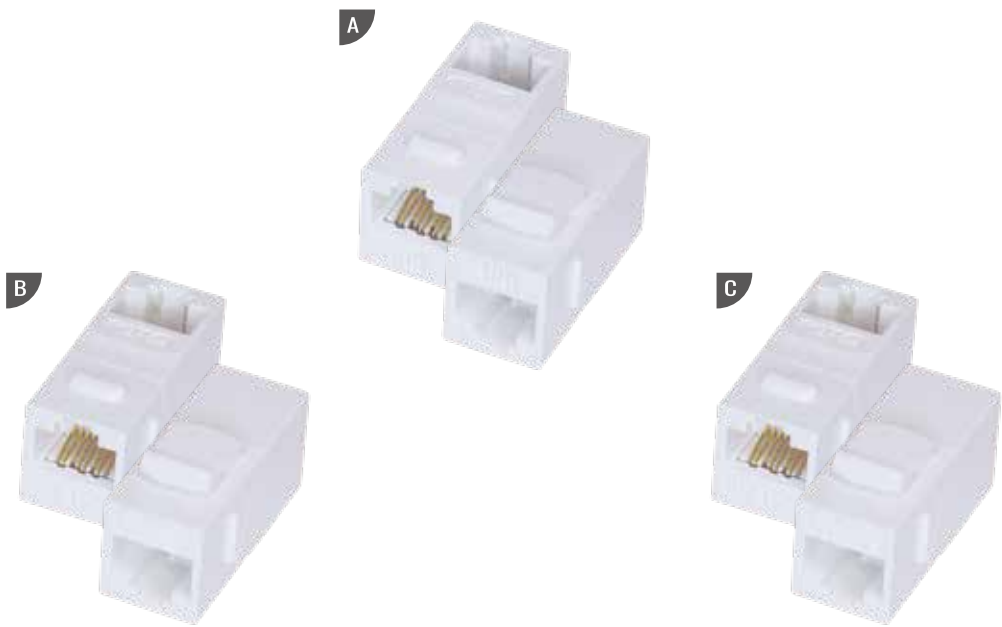
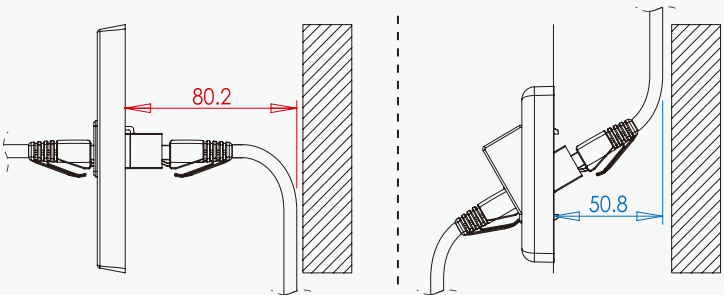
[XX] = Color Option ○WH ●BK

90 Degree Unshielded Coupler

The new 90° coupler saves room in the mounting box or cramped space.



The common 180° coupler takes more room and is not available in cramped space.

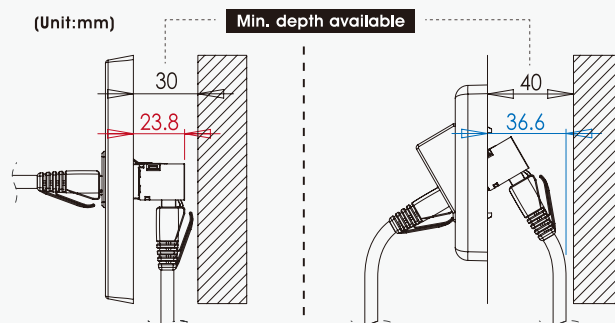


	Part No.	Description
A	2100UQ810GXX	Cat.6A UTP coupler, 90 degree
B	2100UQ8C6XX	Cat.6 UTP coupler, 90 degree
C	2100UQ8C5eXX	Cat.5e UTP coupler, 90 degree

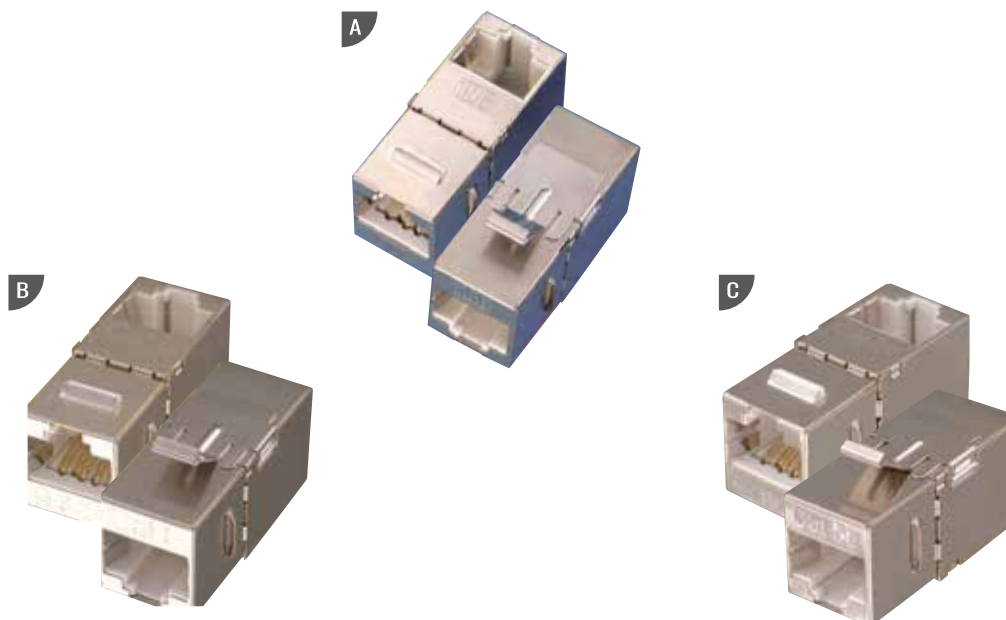
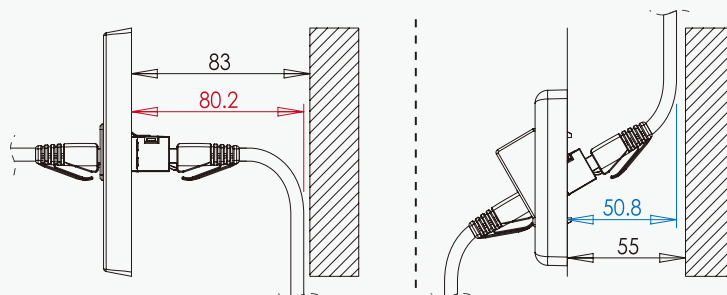
[XX] = Color Option ○WH ●BK

90 Degree Shielded Coupler

The new 90° coupler saves room in mounting box or cramped space.



The common 180° coupler takes more room and is not available in cramped space.



	Part No.	Description
A	2100SQ8SC6AXX	Cat.6A STP coupler, 90 degree
B	2100SQ8SC6XX	Cat.6 STP coupler, 90 degree
C	2100SQ8SC5eXX	Cat.5e STP coupler, 90 degree

[XX] = Color Option OWH ●BK

TRUSTWORTHY SMART PARTNER

DAN-CHIEF TECHNOLOGY CO., LTD.

8F., No. 12, Ln. 270, Sec. 3, Beishen Road,
Shenkeng Dist., New Taipei City 22205, Taiwan

T +886-2-2664-2008 W www.danchief.com
F +886-2-2664-2328 E dce@danchief.com

NINGBO DAN-CHIEF NETWORK TECHNOLOGIES CO., LTD.

601 West Hengshan Rd., Beilun,
Ningbo, Zhejiang, China (315800)

T +86-574-8686-8316
F +86-574-8686-8565



Experience DAN-CHIEF
www.danchief.com

2022
2023