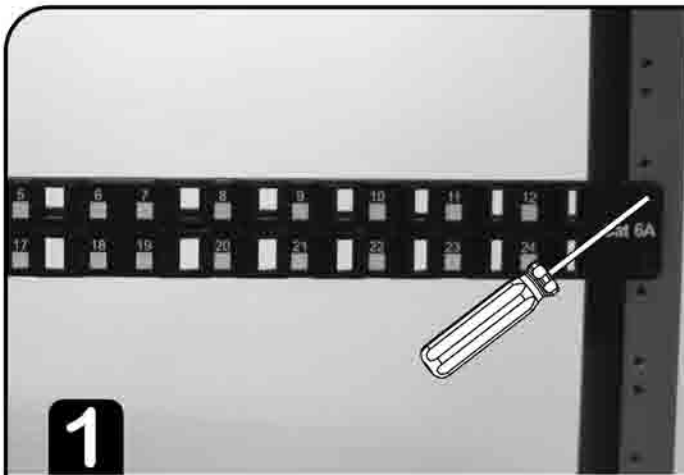


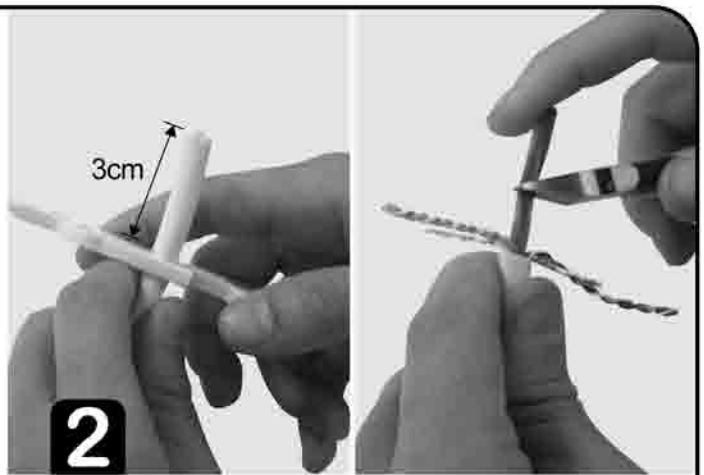
Installation Instructions

Category 6A UTP Angled Snap-In Patch Panel



1

Fix the patch panel on the rack.



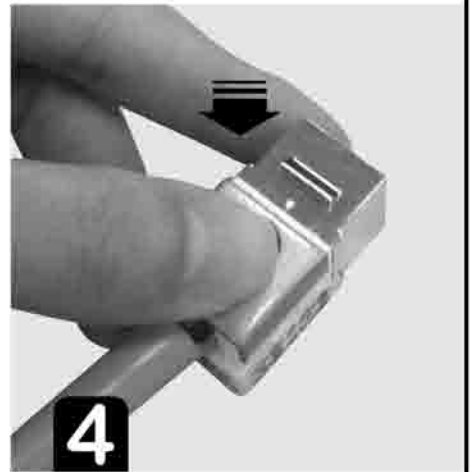
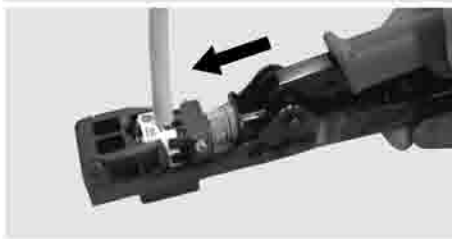
2

Remove about 3cm of the cable sheath. Cut off the filler and separate each pair.



3

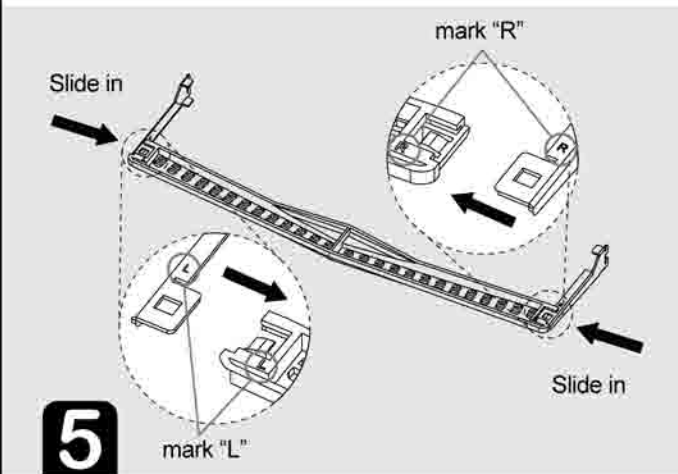
Seat each wire in to the matching colour coded IDC slots. Punch down each wire with a proper impact tool.



4

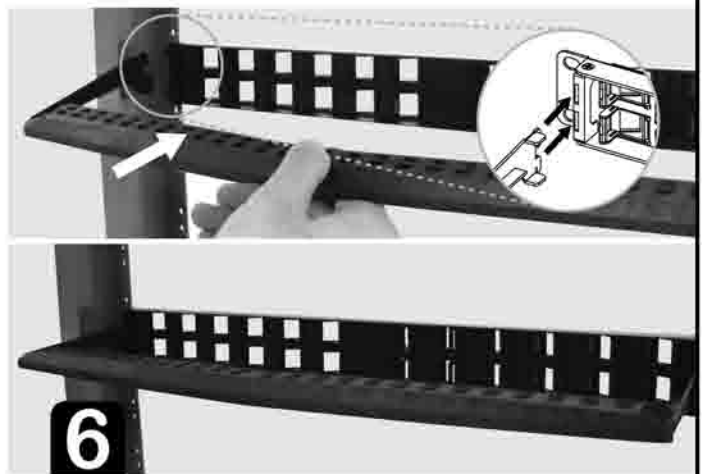
Hood the cap.

HIGHLY RECOMMENDED :
Optional *EZ-TERM* tool for termination.



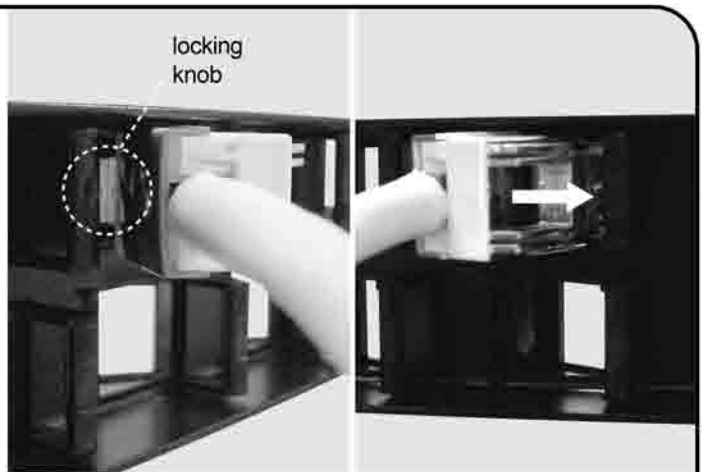
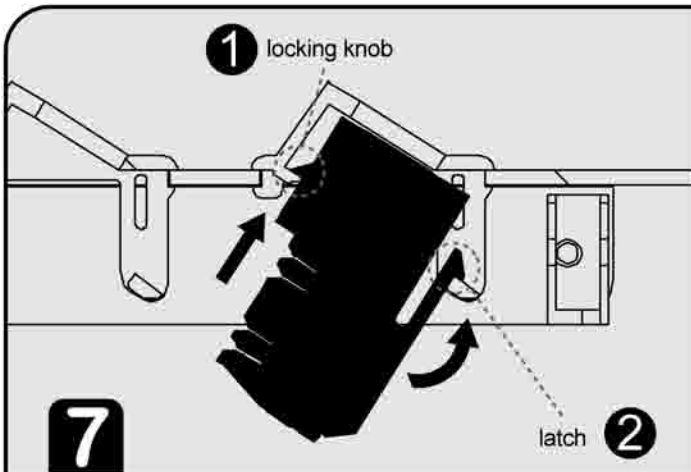
5

Assemble each hanger to the matching end of the bar according to the same marking.



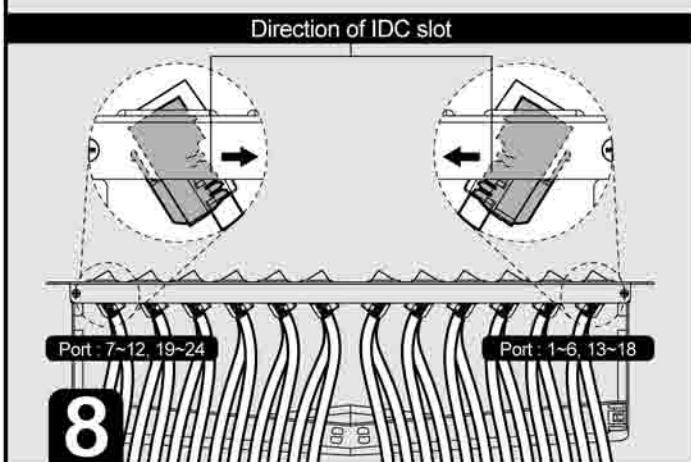
6

Assemble the cable manager to the patch panel.

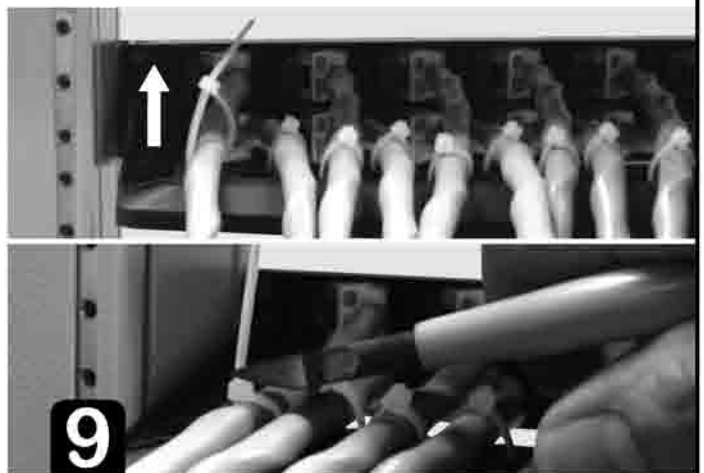


Load the wired keystone jack into the patch panel. Make sure the locking knob is locked first before sliding in the keystone jack.

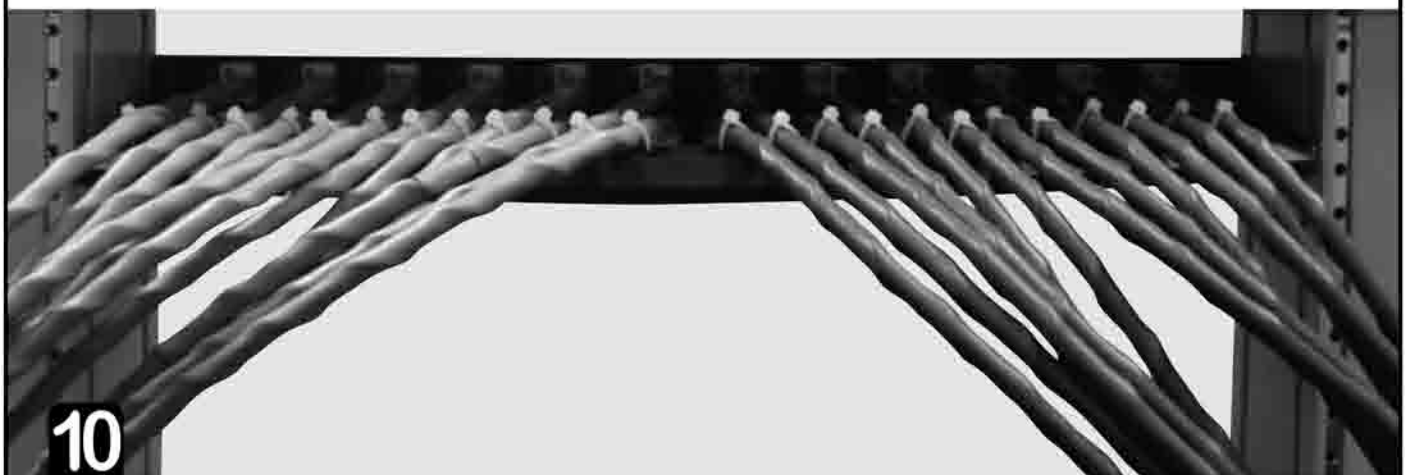
Note: Port 1~6 & 13~18 shares the same orientation while port 7~12 & 19~24 has the opposite. Please follow the instructed direction during installation.



Make sure the IDC slot of the Keystone toward the center of the patch panel.



Secure cables to the cable manager using nylon cable ties. Then tighten up each cable tie and cut off all the excess straps.



Done.

NOTE :

1. DO NOT install wiring in a wet location or during a lightning storm.
2. When terminating cables onto the keystone jack, set your impact tool to low impact. Failure to do so will cause damage to the 110 Clip.
3. After cables terminated, use cable tie to tighten cables. Secured and protect connection.
4. Do not insert RJ-11 6P plug. RJ-45 and RJ-11 connection are not compatible nor interoperable.