

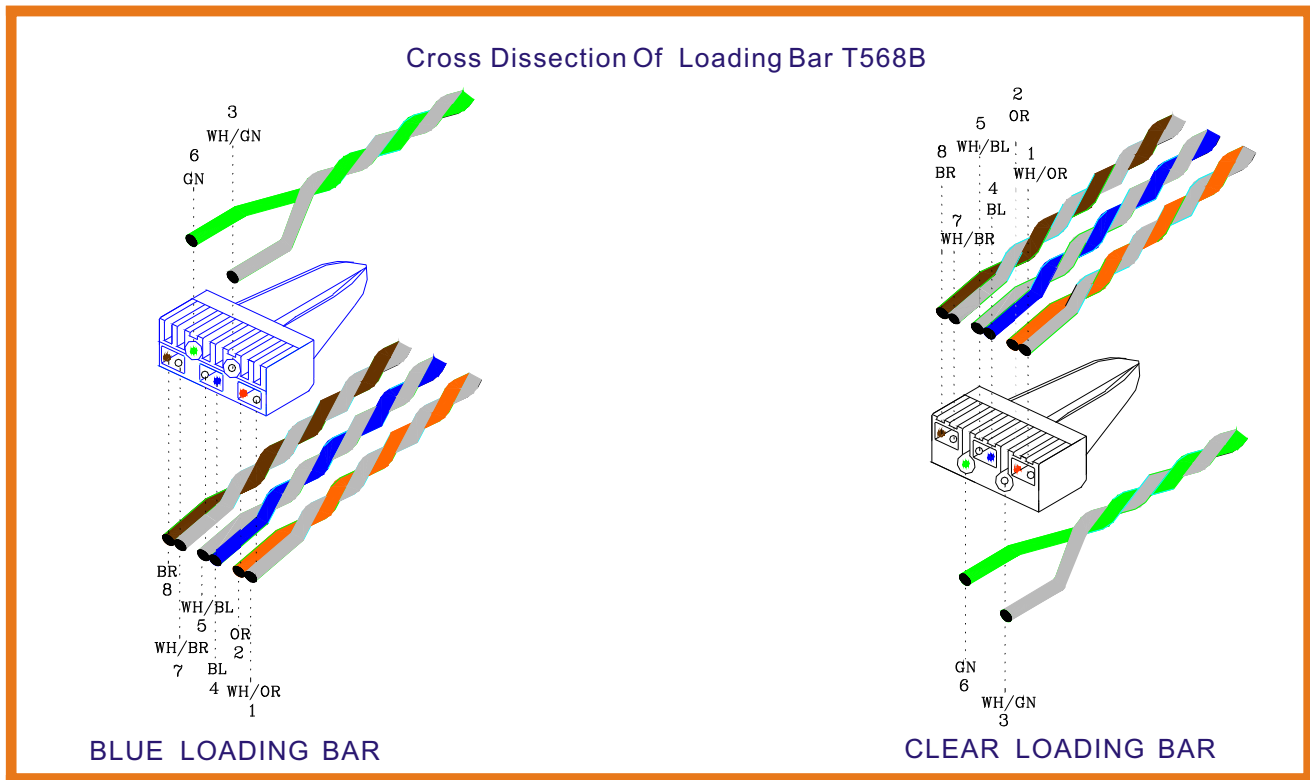
# Assembly Instruction For Cat 6 Modular Plug



BLUE PLUG AND LOADING BAR



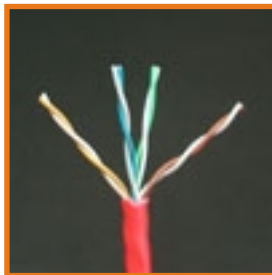
CLEAR PLUG AND LOADING BAR



Green

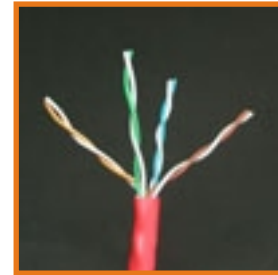
Blue

Orange



Brown

Orange



Brown

Blue

Green

Blue plug use this side of cable

Clear plug use this side of cable

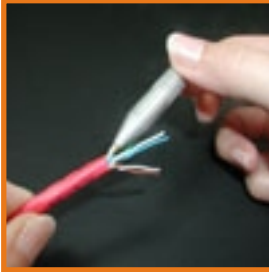
- Select the appropriate modular plug housing (blue or clear) and loading bar.
- Understand the two different designs of the CAT6 modular plugs. Please pay close attention to the following assembly procedures.

## Blue Plug



### Step 1

- Remove around 1.25inch(3.2cm) of cable jacket without damage inner paired wire.
- Separate the color-coded wire pairs according to TIA standard (T568A or T568B).



### Step 2

- Untwist the top end of each pair and leave the base of wire twisted.
- In addition, twist the base of each pair 180 degree (one circle) to ensure optimum performance.



### Step 3

- Align wires according to the standard of T568A or B and slowly insert the wires into the loading bar while keeping each pair in proper wiring sequence.



### Step 4

- After carefully insert wires into loading bar, push the loading bar to the base of the cable and trim each wire at the edge of the loading bar.



### Step 5

- Make sure all the wire conductors are flush and the total distance of the wires between the cable jacket and the top edge of the loading bar should not exceed 0.45inch(1.14cm).



### Step 6

- Insert the loading bar all the way inside housing and terminate.



### Step 7

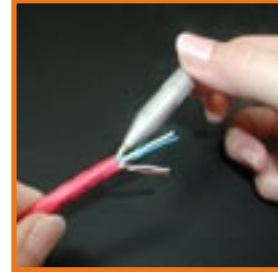
- Injection molding boot may be used to ensure optimum quality and performance in hostile environment.

## Clear Plug



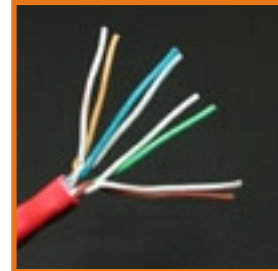
### Step 1

- Remove around 1.25inch(3.2cm) of cable jacket without damage inner paired wire.
- Separate the color-coded wire pairs according to TIA standard (T568A or T568B).



### Step 2

- Untwist the top end of each pair and leave the base of wire twisted.
- In addition, twist the base of each pair 180 degree (one circle) to ensure optimum performance.



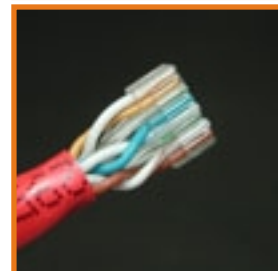
### Step 3

- Align wires according to the standard of T568A or B and slowly insert the wires into the loading bar while keeping each pair in proper wiring sequence.



### Step 4

- After carefully insert wires into loading bar, push the loading bar to the base of the cable and trim each wire at the edge of the loading bar.



### Step 5

- Make sure all the wire conductors are flush and the total distance of the wires between the cable jacket and the top edge of the loading bar should not exceed 0.45inch(1.14cm).



### Step 6

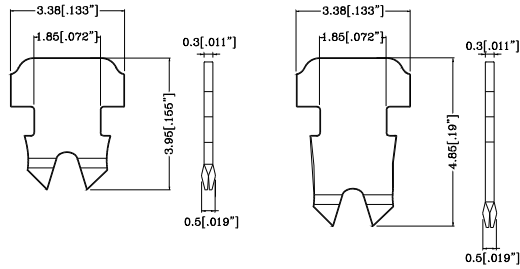
- Insert the loading bar all the way inside housing and terminate.



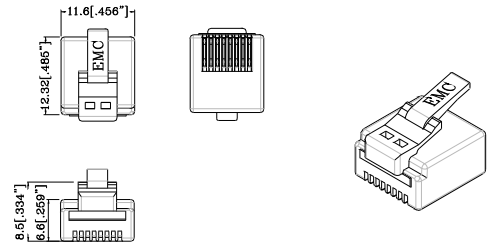
### Step 7

- Injection molding boot may be used to ensure optimum quality and performance in hostile environment.

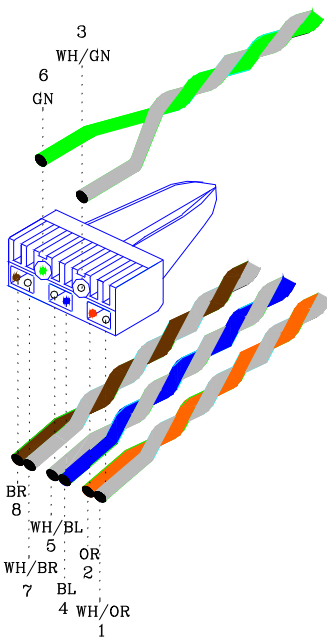
## Category 6 RJ-45 Modular Plugs



Patented contact design can improve performance and ensures reliable termination with both stranded and solid conductors from 28 ~ 24 AWG.



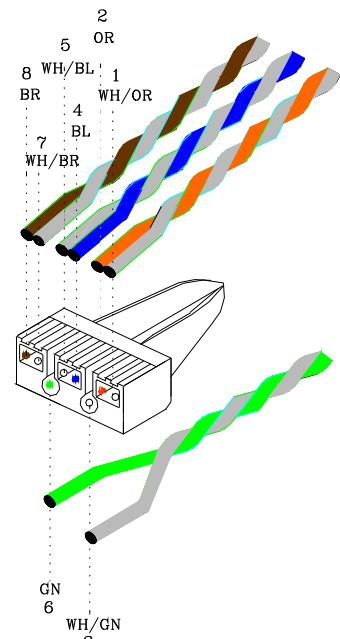
Patent pending plug design can give you a stable, highest performance result patch cable for all of your cutting edge applications.



BLUE LOADING BAR

**MATERIALS:**  
Housing & loading bar: UL94V-0 PC  
Contact: Phosphor bronze  
Contact plating: 50U" selective gold plate

**ELECTRICAL CHARACTERISTICS**  
Current rating: 1.5 AMP (max) @25°C  
Voltage rating: 150 VAC (max)  
Insulation resistance: 500 MΩ (minimum)



CLEAR LOADING BAR